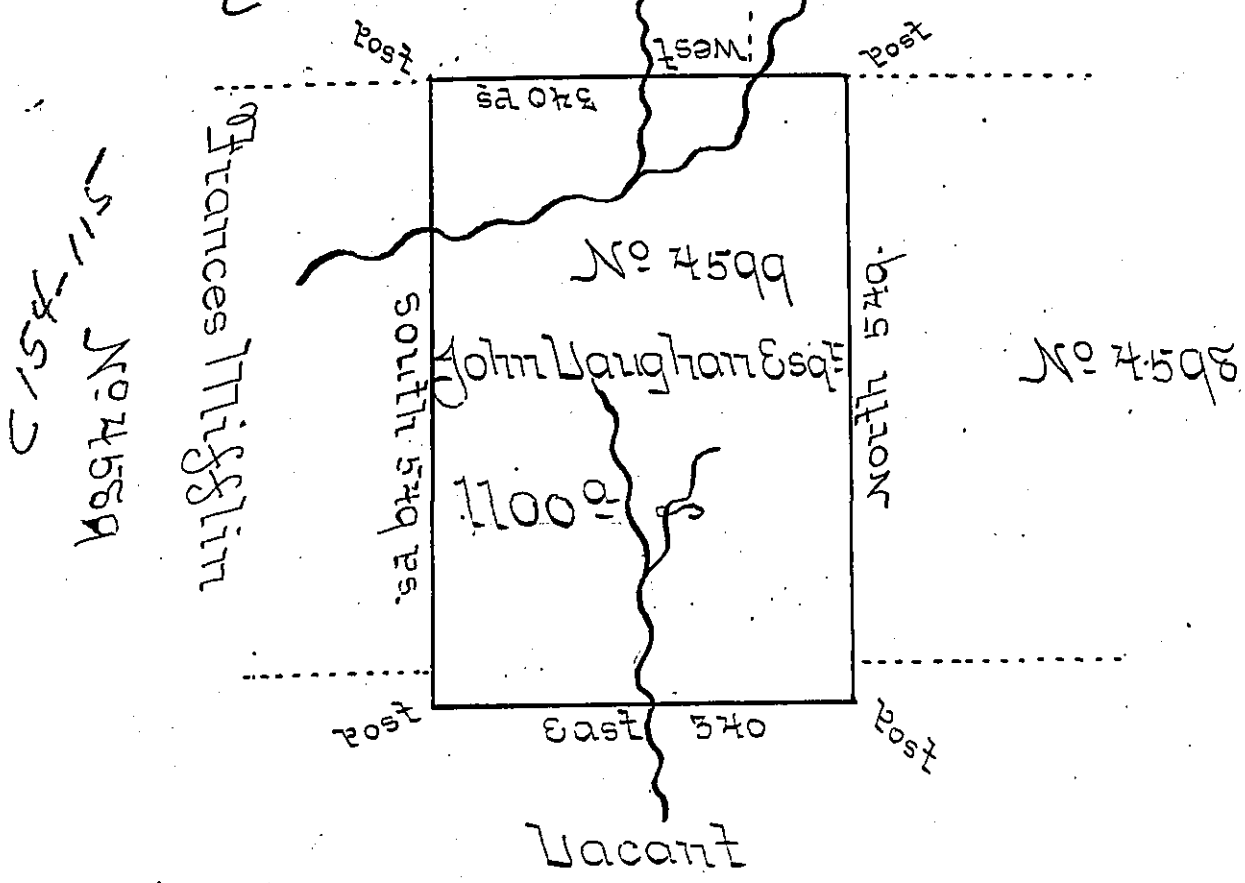


Emily Misslin  
C154-102

John Vaughan Esq: No 4590

A 78-112



Surveyed the above described Tract of Land on the 17<sup>th</sup> day of  
 the 4<sup>th</sup> Month 1794 for John Vaughan Esq: in pursuance of  
 his Warrant No 4599. dated December 30<sup>th</sup> 1793-situate  
 upon the Waters of Howanda Creek, adjoining Frances  
 Misslin, Emily Misslin & his other Lands &c -  
 Containing Eleven Hundred Acres & ~~seventy seven~~ ~~peches~~  
 & the Allowance of six Percent -

William Ellis D.S.

Daniel Brodhead Esq: }  
 Surveyor General - }

IN TESTIMONY that the above is a copy of the original remaining on file in  
 the Department of Internal Affairs of Pennsylvania, made  
 conformably to an Act of Assembly approved the 16th day of  
 February, 1833, I have hereunto set my Hand and caused  
 the Seal of said Department to be affixed at Harrisburg,  
 this first day of January 1901.

*James W. Pitta*  
 Secretary of Internal Affairs.